



**40**  
yrs  
SINCE 1982



# CLEANING SOLUTIONS COMMERCIAL & INDUSTRIAL

**DESIGNED AND DEVELOPED FOR**  
CAR CARE • HOTEL / ACCOMMODATION CENTRE  
CATERING • INDUSTRIAL SECTOR

# 40 YEARS

OF EXPERTISE



**RELIABLE,  
POWERFUL,  
ECONOMICAL.**

Drainvac offers a wide **range of products which can be combined with one another** to offer you a configuration that will answer perfectly to your specific needs.

On the industrial level, **Drainvac is equally specialized to design customized systems** for your business with power that can go up to **30 HP!**



**When safety is a top priority,** we can help you prevent **fires and explosions in hazardous environments** with specialized systems following NFPA standards.



**POWERFUL CLEANING  
POWERFUL RESULTS**

The following pages will demonstrate different types of suggested installations\* for selected sectors.

\*The following installations are examples of configurations most commonly used, but may be adapted or improved. For any questions, do not hesitate to contact your authorized Drainvac dealer or your sales representative.



### LIANE CHAGNON

Tim Hortons franchise Mont-St-Hilaire

“Drainvac has the perfect solution for wet carpets [...] **It gets rid of the calcium, the snow** [...] It's really something we love.”

“We no longer need to wash the tank, wash the mop, then rinse all of it.”



### ÉRIC DUMOUCHEL

President of Baril Ford

“No more equipment on wheels hitting doors or side panels”

“We have separated the motor from the employees [...] **It's quieter, people can talk to each other.**”

“We've been with Drainvac since **2007**, so there's a **trusting relationship that was established.**”



### SAM DOUM

President of Autodoum

“Drainvac's hose reel is very practical. Mounted onto the wall or ceiling, **it keeps the floor clear**”

“**The savings are huge especially** when it comes to replacement parts. It's really **a reliable system.**”

“We used to have two types of equipment; one for the dust and another for the wet carpets. **With Drainvac's system, we can do both!**”

## FORMER METHOD



**Bulky, noisy, emits bad odours, can leave marks and scratches.**



**Risk of damaging your surroundings.**



**A hassle to carry and can cause back pain.**



**A disposable dust bag, a filter or cartridges** must be changed regularly. In addition, it must be **emptied manually and produces lots of dust.**



The other possibility consists of commercial vacuums which are normally **huge** and require **an outdoor installation.**



**Vacuums only dry substances.**

## DRAINVAC'S METHOD



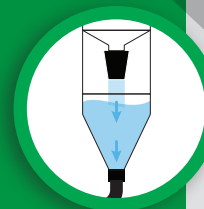
**Silent, no odors nor marks and scratches.**



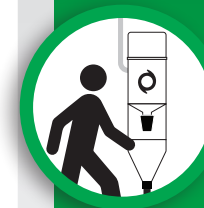
**Safe for the surroundings.**



**Nothing to carry.**



**Automatically empties itself and does not carry any dust bags, nor filters or cartridges.** A huge time and money saver!



**Compact design.**



**Vacuums both liquids and solids.**



## CAR CARE

**P8-9** 1 USER CONFIGURATION  
MODERATE USAGE - MANUAL DISCHARGE

**P10-11** 1 USER CONFIGURATION  
MODERATE USAGE - AUTOMATIC DISCHARGE

**P12-13** 1 USER CONFIGURATION  
FREQUENT USAGE

**P14-15** 1 TO 2 USER CONFIGURATION

**P16-17** SELF-SERVICE CONFIGURATION

**CONFIGURATION:  
1 USER**

MODERATE USAGE  
MANUAL DISCHARGE

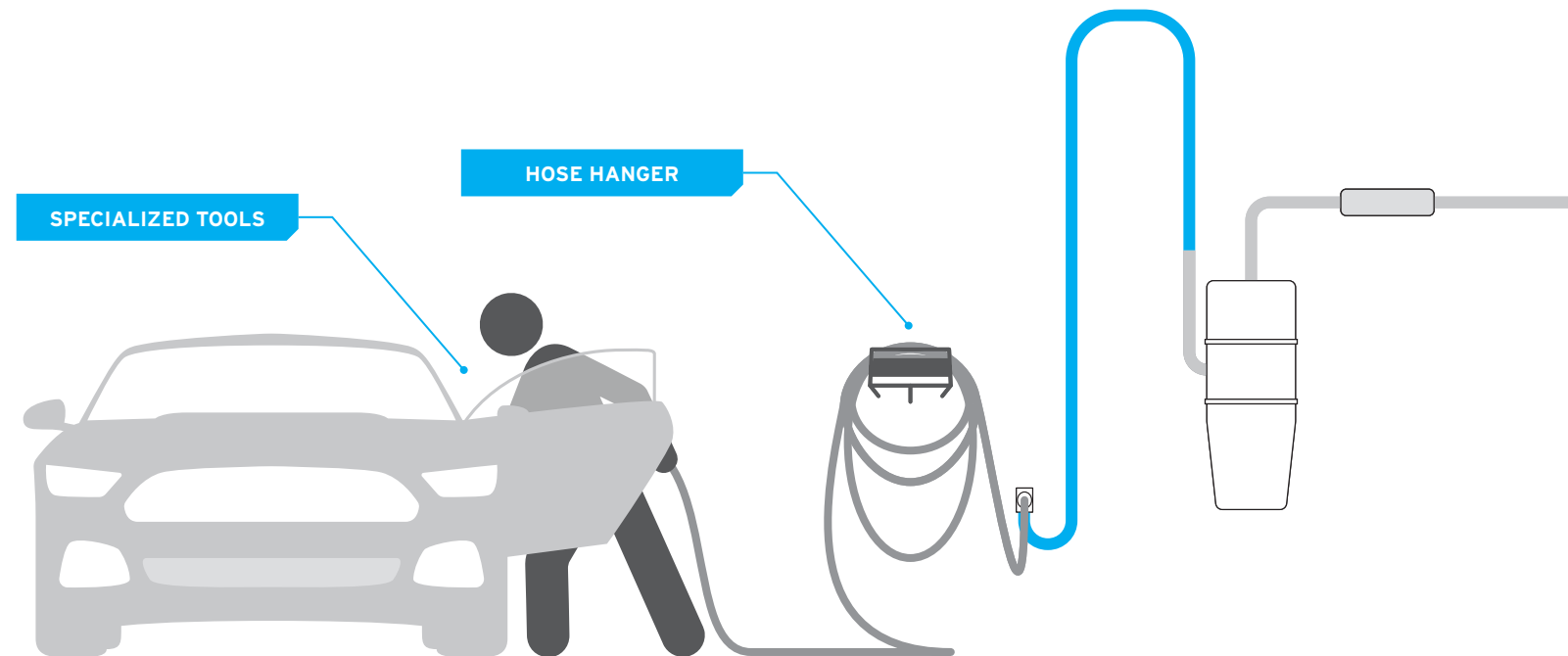


**RECOMMENDED UNIT**

**CYCLONIK**

- Cyclonic vacuum.
- Constant suction, unlike other systems which carry dust bags.
- Vacuums solids and liquids.

Legend: ■ Dry-Liquid Line



**DETAILING**

**Cyclonik System**

DV1R19-27CT : 181 H<sub>2</sub>O | 122 CFM

DF1R19-CT : 4191 mmH<sub>2</sub>O | 198 m<sup>3</sup>/h

Basic installation designed for **1 user at a time only**. Unlike other systems that require a dust bag, the Cyclonik **does not lose any suction power**. Perfect for small businesses.

**CONFIGURATION:  
1 USER**

MODERATE USAGE  
AUTOMATIC DISCHARGE

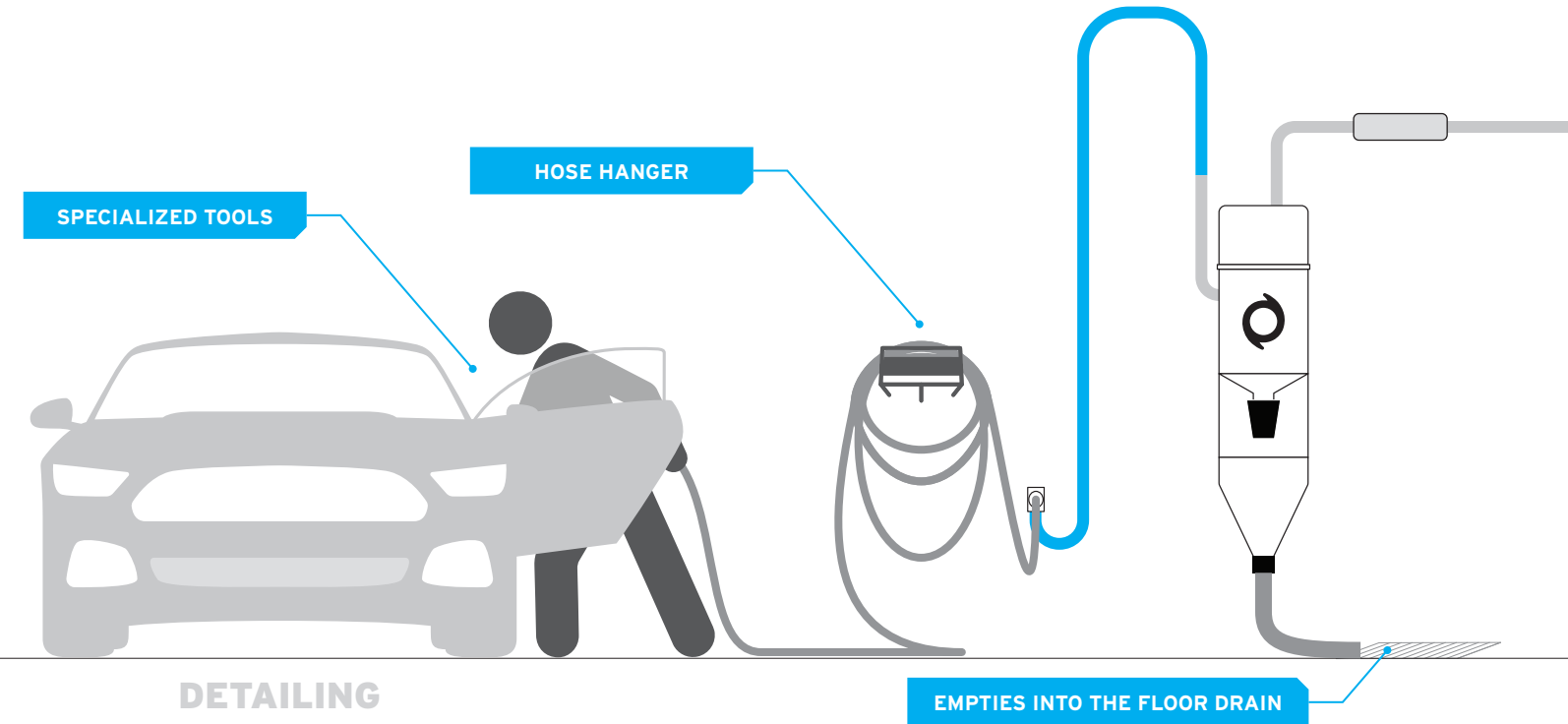


**RECOMMENDED UNIT**

**AUTOMATIK**

- 2 in 1 system: vacuums both dry and liquid substances.
- No post-cleaning required: no filter or bag.
- Automatically discharges into the floor drain.
- Ideal for shampooing.
- Easy maintenance through the porthole.
- Collect accidentally vacuumed objects thanks to the decanter.

Legend: ■ Dry-Liquid Line



**DETAILING**

**Automatik System**

**DV2A313-CB : 160 H<sub>2</sub>O | 111 CFM**

**DF2A313-CB : 4191 mmH<sub>2</sub>O | 198 m<sup>3</sup>/h**

Basic installation designed for **1 user at a time**. Vacuums **both dry and liquid substances**. Perfect for small businesses.

**CONFIGURATION:  
1 USER**

**FREQUENT USAGE**



**RECOMMENDED UNIT**

**AUTOMATIK**

- 2 in 1 system: vacuums both dry and liquid substances.
- No post-cleaning required: no filter or bag.
- Drains automatically into sanitary piping or can be redirected towards a floor drain.
- Ideal for shampooing.
- Easy maintenance through the porthole.
- Collect accidentally vacuumed objects thanks to the decanter.

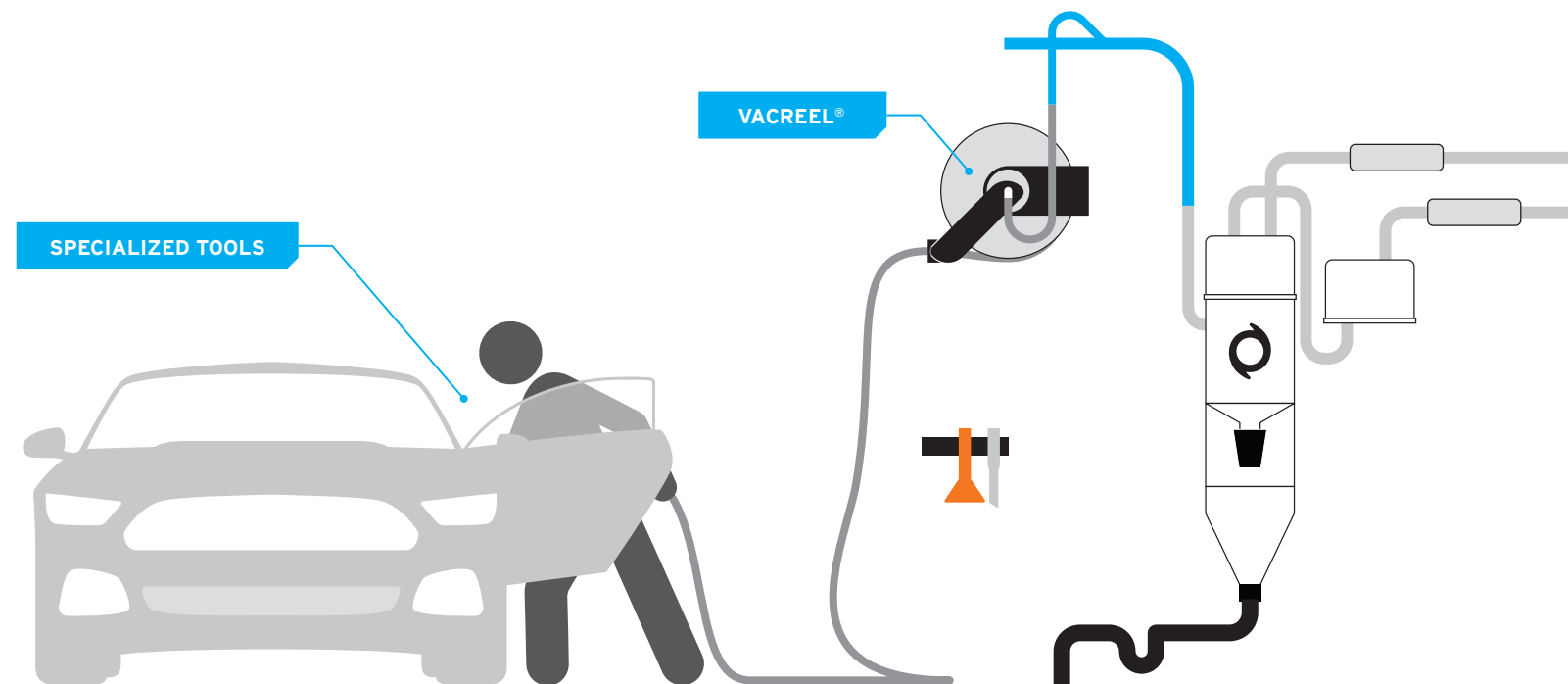


**COMPLEMENTARY ACCESSORIES**

**VACREEL®**

- Retractable hose.
- Safe work environment.
- Hose available in 1.25" (32mm) or 1.5" (38mm).
- Tools with wall support included.

Legend: ■ Dry-Liquid Line



**DETAILING**

**Automatik System with VacReel®**

**DV2A31-27CB + TETE27 :**  
181 H<sub>2</sub>O | 224 CFM

**DF2A31-CB + TETE05 :**  
4191 mmH<sub>2</sub>O | 396 m<sup>3</sup>/h

Used by **1 user at a time**, the Automatik vacuums both **dry and liquid substances**. The VacReel® allows you to work efficiently and safely.

**CONFIGURATION:  
1 TO 2 USERS**



**RECOMMENDED UNIT**

**AUTOMATIK SEPARATOR**

- 2 in 1 system: vacuums both dry and liquid substances.
- No post-cleaning required: no filter or bag.
- Drains automatically into sanitary piping or can be redirected towards a floor drain.
- Ideal for shampooing.
- Easy maintenance through the porthole.
- Collect accidentally vacuumed objects thanks to the decanter.

**11.5 HP MOTOR**

- Regen-type motor.
- Designed to run for several consecutive hours.
- Stainless steel housing.



**COMPLEMENTARY ACCESSORIES**

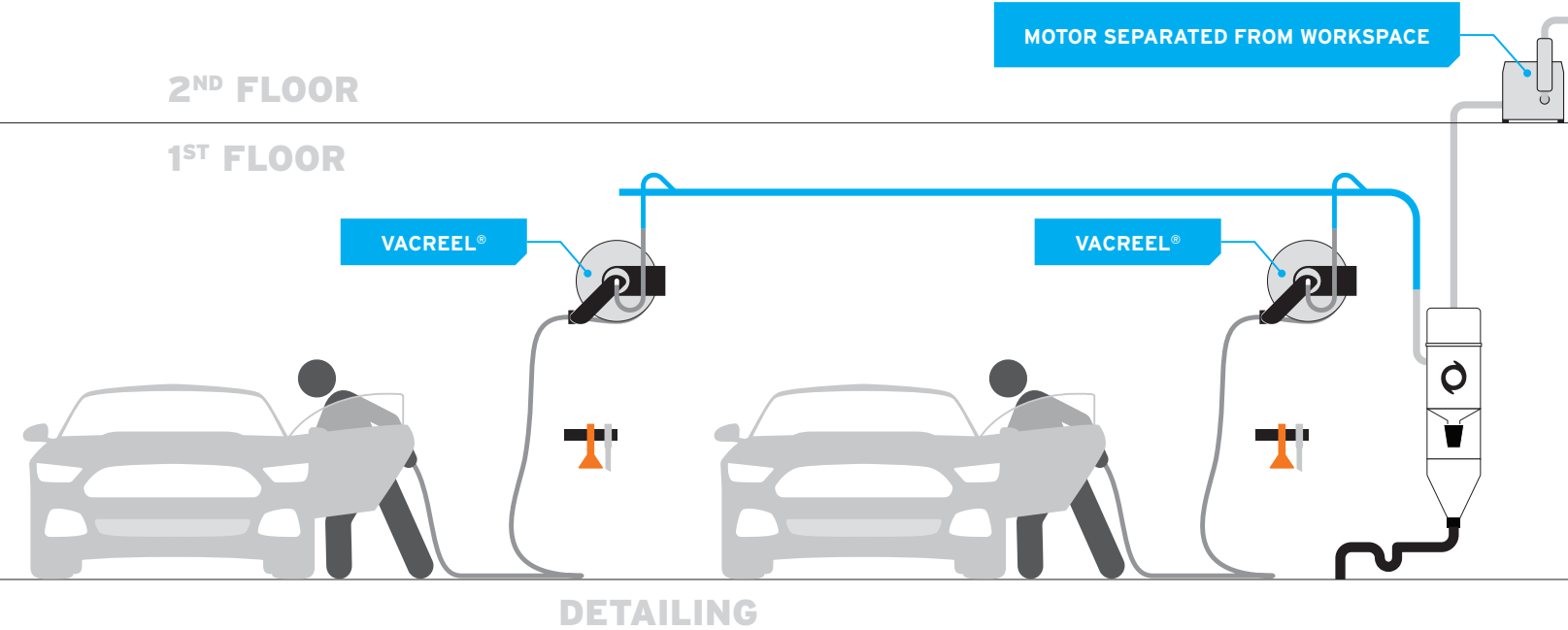
**VACREEL®**

- Retractable hose.
- Safe work environment.
- Hose available in 1.25" (32mm) or 1.5" (38mm).
- Tools with wall support included.

Legend: ■ Dry-Liquid Line

2<sup>ND</sup> FLOOR

1<sup>ST</sup> FLOOR



**Automatik Separator  
with VacReel®**

**REGEN Motor**  
365 CFM (620 m<sup>3</sup>/h), 141 H<sub>2</sub>O (-350 mbar)

**Powered by an external motor**, the Automatik Separator can serve up to 2 users at a time and can handle both **dry and liquid substances**.



## CONFIGURATION: SELF-SERVICE



## RECOMMENDED UNIT

### INDUSTRIAL AUTOMATIK

- Custom-made.
- Designed to operate for several consecutive hours.
- Compact design compared to our competitors.
- No cartridge or filter to maintain.
- No post-cleaning required.
- Drains automatically into sanitary piping or can be redirected towards a floor drain.
- Easy access to the tank through the porthole.
- Automated cleaning cycle.
- Piping available in two sizes: 3" (76mm) or 4" (102mm).
- Easy maintenance through the porthole.
- Collect accidentally vacuumed objects thanks to the decanter.

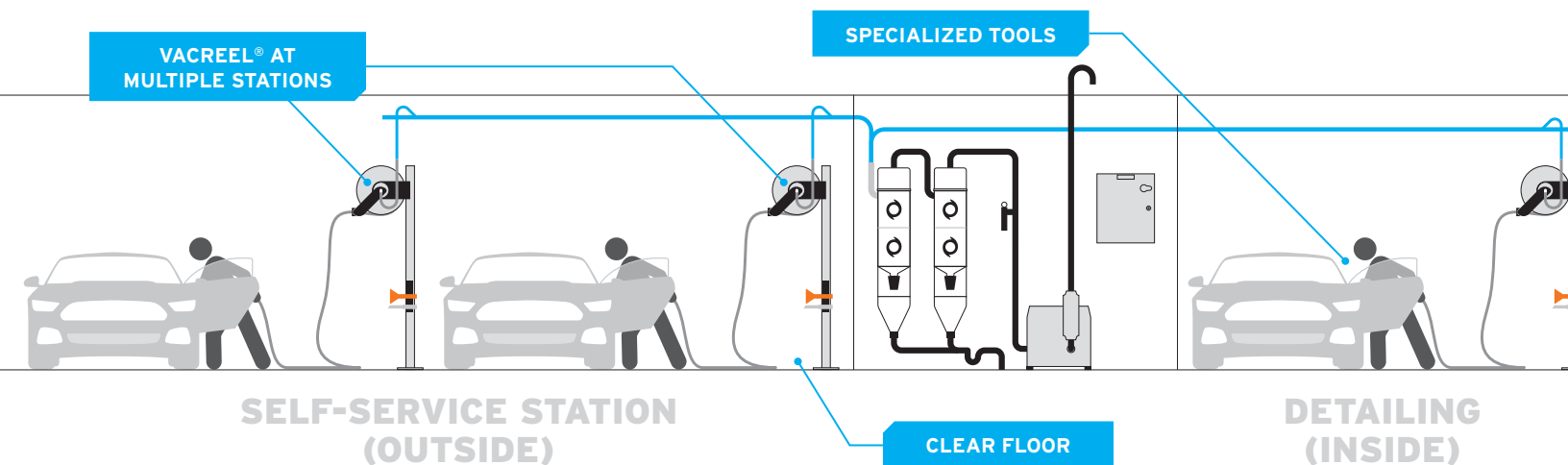
### COMPLEMENTARY ACCESSORIES

#### VACREEL®

- Retractable hose.
- Safe work environment.
- Hose available in 1.25" (32mm) or 1.5" (38mm).
- Tools with wall support included.



Legend: ■ Dry-Liquid Line



Custom-made **Industrial Automatik**  
with **VacReel®**

**REGEN Motor**  
17 HP (12.6 kW) to 30 HP (21.3 kW)

**Exterior installation for self-service.** In this case, **every cleaning station is equipped with a VacReel®.** If your business offers a detailing service, **a cleaning station can be added.** **Everything is connected to the same vacuum system.**



## CATERING

**P20-21** CONFIGURATION FOR SMALL SURFACES

**P22-23** CONFIGURATION FOR LARGE SURFACES

## CONFIGURATION: SMALL SURFACES

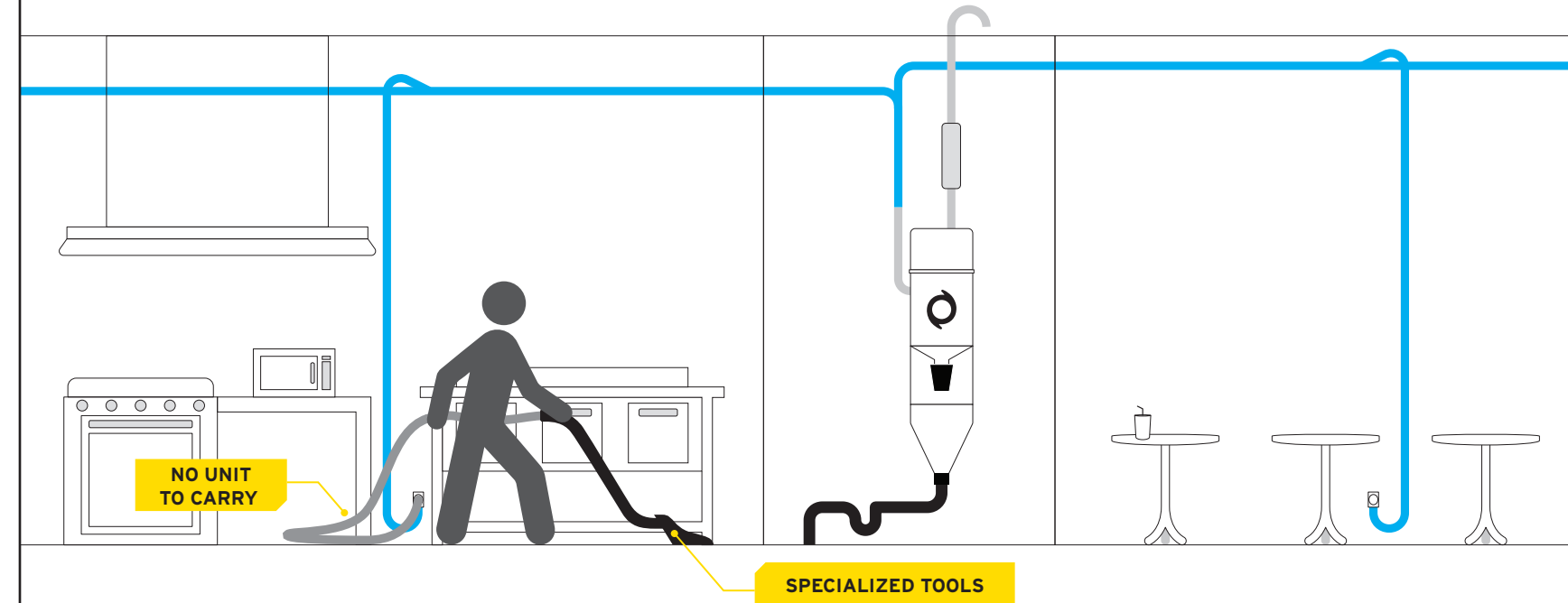


### RECOMMENDED UNIT

#### AUTOMATIK

- 2 in 1 system: vacuums both dry and liquid substances.
- No post-cleaning required: no filter or bag.
- Drains automatically into sanitary piping or can be redirected towards a floor drain.
- Easy maintenance through the porthole.
- Collect accidentally vacuumed objects thanks to the decanter.

Legend: ■ Dry-Liquid Line



#### Automatik System

**DV2A313-CB** : 160 H<sub>2</sub>O | 111 CFM

**DF2A313-CB** : 4191 mmH<sub>2</sub>O | 198 m<sup>3</sup>/h

Only one system is necessary to clean the entire kitchen and dining area. **Specially designed accessories for the kitchen** are offered to reach **difficult areas and arduous tasks.**

**CONFIGURATION:  
LARGE SURFACE**



**RECOMMENDED UNIT**

**AUTOMATIK**

- 2 in 1 system: vacuums both dry and liquid substances.
- No post-cleaning required: no filter or bag.
- Drains automatically into sanitary piping or can be redirected towards a floor drain.
- Ideal for shampooing.
- Easy maintenance through the porthole.
- Collect accidentally vacuumed objects thanks to the decanter.

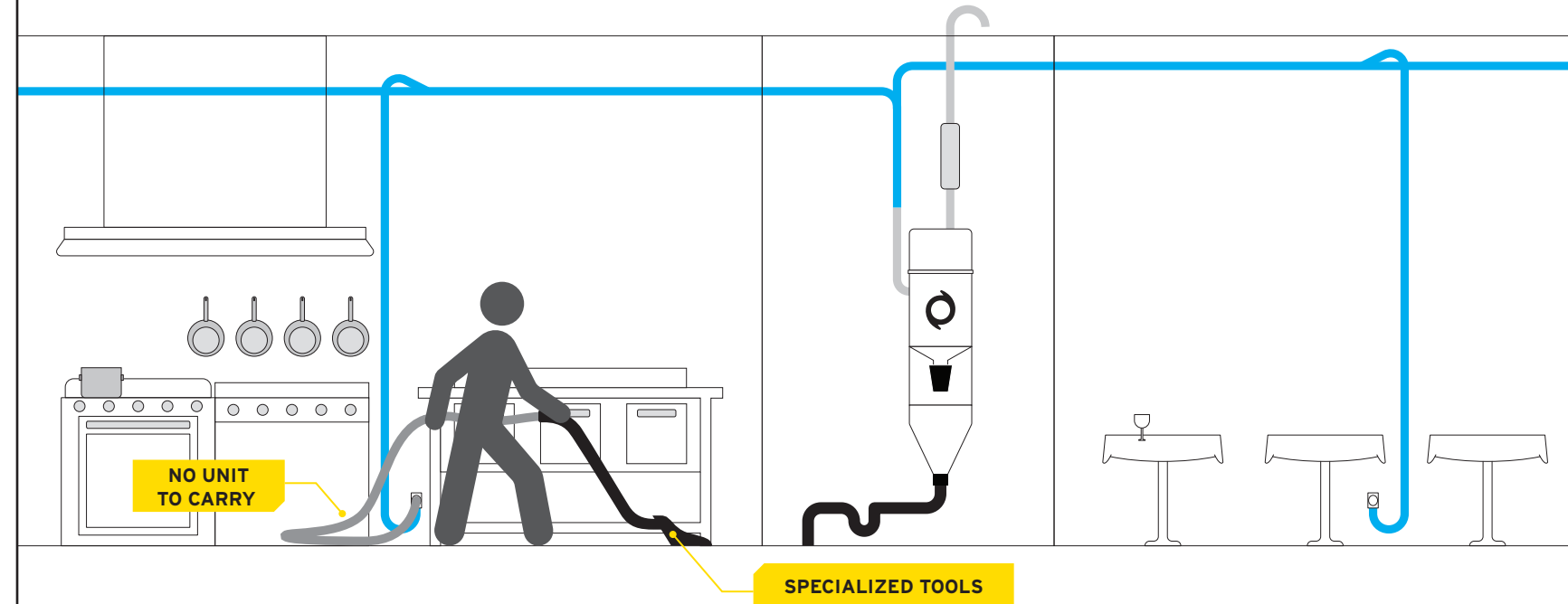


**COMPLEMENTARY ACCESSORIES**

**BOOSTER HEAD**

- Boosts your system's power.
- Installed in series for more suction.
- Installed in parallel for more airflow.

Legend: ■ Dry-Liquid Line



**Automatik System**

**DV2A31-27CB : 181 H<sub>2</sub>O | 122 CFM**

**DF2A31-CB : 4191 mmH<sub>2</sub>O | 198 m<sup>3</sup>/h**

Only one system is necessary to maintain the whole restaurant. **Specially designed tools for the kitchen** are offered to **reach hard places and for the tough clean-ups.**



## **HOTEL & ACCOMMODATION CENTER**

**P26-27 4 FLOORS OR LESS CONFIGURATION**

**P28-29 5 FLOORS OR MORE CONFIGURATION**

**CONFIGURATION:  
4 FLOORS OR LESS**



**RECOMMENDED UNIT**

**CYCLONIK**

- Cyclonic vacuum.
- Constant suction, unlike other systems which carry dust bags.
- Vacuums solids and liquids.

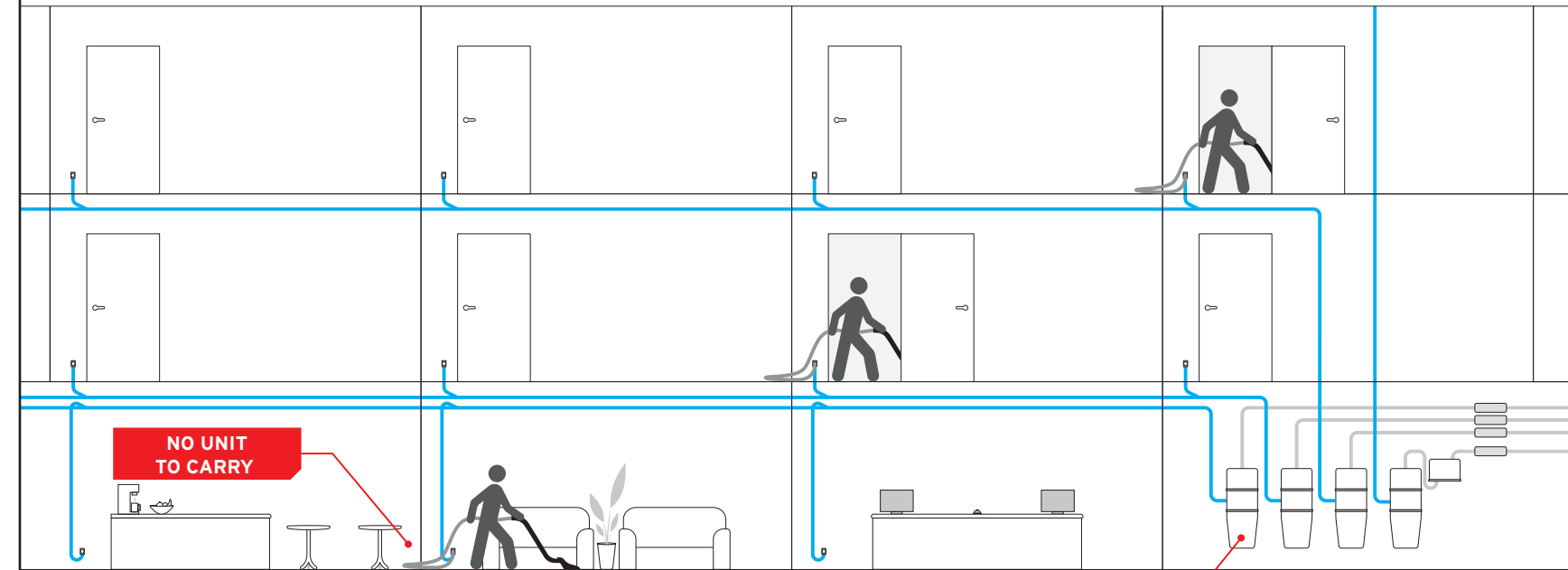


**COMPLEMENTARY ACCESSORIES**

**BOOSTER HEAD**

- Boosts your system's power.
- Installed in series for more suction.
- Installed in parallel for more airflow.

Legend: ■ Dry Line



**Cyclonik System**

**DV1R19-27CT : 181 H<sub>2</sub>O | 122 CFM**

**DF1R19-CT : 4191 mmH<sub>2</sub>O | 198 m<sup>3</sup>/h**

Whether installed in a mechanical room or in a basement, **each unit is dedicated to a floor. A booster head may be required** for the last floor in order to supply sufficient power.

**CONFIGURATION:  
5 FLOORS OR MORE**



**RECOMMENDED UNIT**

**INDUSTRIAL AUTOMATIK**

- Custom-made.
- Designed to operate for several consecutive hours.
- Compact design compared to our competitors.
- No cartridge or filter to maintain.
- No post-cleaning required.
- Drains automatically into sanitary piping or can be redirected towards a floor drain.
- Easy access to the tank through the porthole.
- Automated cleaning cycle.
- Piping available in two sizes: 3" (76mm) or 4" (102mm).
- Easy maintenance through the porthole.
- Collect accidentally vacuumed objects thanks to the decanter.

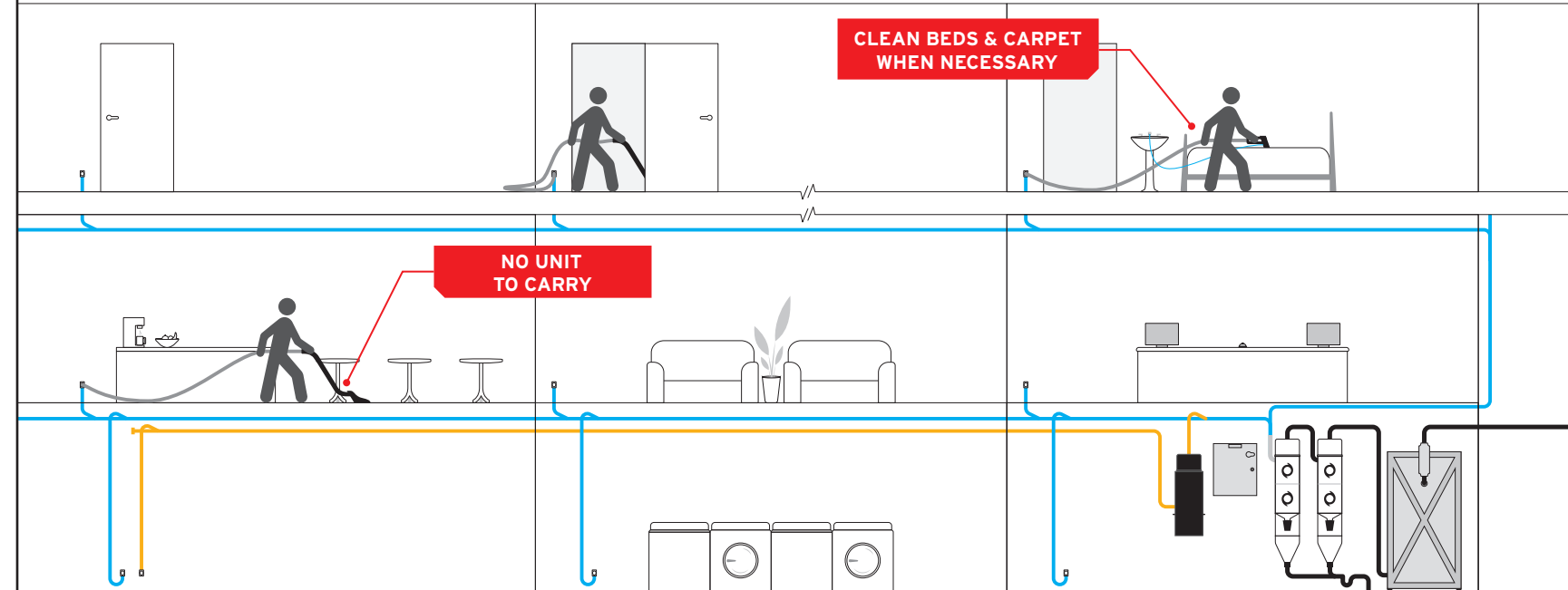


**COMPLEMENTARY ACCESSORIES**

**METAL SEPARATOR**

- Intercepts the waste before it even reaches your vacuum system.
- Equipped with a cartridge filter.

Legend: ■ Dry-Liquid Line ■ Dry Line



Custom-made **Industrial Automatik** with **separator**

**REGEN Motor**  
17 HP (12.6 kW) to 30 HP (21.3 kW)

Three stacked motors are connected to a control panel which **supplies each floor according to the number of users**. Notice that **more than one user can be on the same floor**, unlike the previous setup.



## Drainvac can assist you with system installations in environments where fires and explosions are at risk!

### Preventive cleaning

All rooms where combustible dusts are generated shall be cleaned as often as necessary to prevent the accumulation of dusts in quantities that can present a fire or explosion hazard.

### Cleaning

The upkeep of the work premises of an establishment shall be ensured through vacuuming, wet mopping or any other method that controls and reduces to a maximum the stirring up of dust.

### Static electricity

Buildings and machinery should be cleaned with equipment: which does not generate static electricity or sparks; which conducts electricity and is grounded; which vacuums dust and conveys it to a safe place.



# INDUSTRIAL SECTOR

**P32-33** INTEGRATED CONFIGURATION (OFFICE & FACTORY)



## CONFIGURATION: OFFICE & FACTORY



## RECOMMENDED UNIT

### INDUSTRIAL AUTOMATIK

- Custom-made.
- Designed to operate for several consecutive hours.
- Compact design compared to our competitors.
- No cartridge or filter to maintain.
- No post-cleaning required.
- Drains automatically into sanitary piping or can be redirected towards a floor drain.
- Easy access to the tank through the porthole.
- Automated cleaning cycle.
- Piping available in two sizes: 3" (76mm) or 4" (102mm).
- Easy maintenance through the porthole.
- Collect accidentally vacuumed objects thanks to the decanter.



### COMPLEMENTARY ACCESSORIES

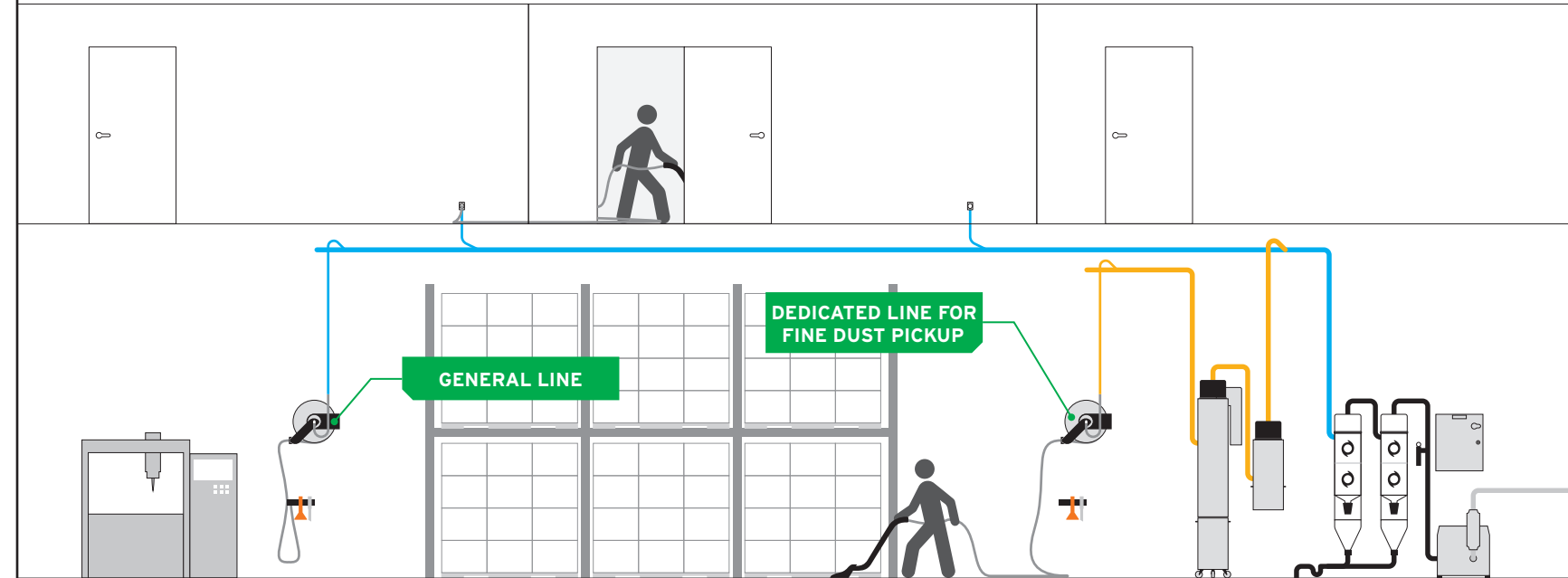
#### FINE DUST SEPARATOR

- Collects large volumes of fine dust.
- Features a self-cleaning cartridge filter.
- Follows NFPA standards.
- Includes a bin on wheels.

#### VACREEL®

- Retractable hose.
- Safe work environment.
- Hose available in 1.25" (32mm) or 1.5" (38mm).
- Tools with wall support included.

Legend: ■ Dry-Liquid Line  
■ Fine Dust Line



Custom-made **Industrial Automatik** with **fine dust separator** and **VacReel®**

**REGEN Motor**  
17 HP (12.6 kW) to 30 HP (21.3 kW)

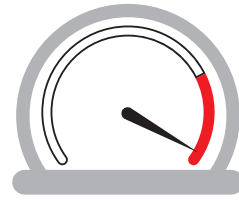
Dry-liquid piping lines are installed throughout the building and a dedicated line for fine dust reaches the specialized station.

## VFD OPTION: Variable Frequency Drive

The control panel is programmed **to adjust the motor's power according to the number of users.**



Based on the average annual energy consumption, **the financial return of the VFD panel is reached in about 3 years.**



If necessary, you can **increase the motor's power by up to 40%**, equivalent to an additional user.



80% of the time, the unit operates with 1 to 2 users. It is only 20% of the time that the unit is used at its fullest capacity. This said, with the VFD option, you can **save up to 30% on energy.** In addition, you **increase the motor's lifespan.**

### ACCORDING TO SCHNEIDER

[www.eco2-0.schneider-electric.com/chrome/root/](http://www.eco2-0.schneider-electric.com/chrome/root/)

#### Main data entry of a 35 HP motor

Voltage (V)	<b>380</b>
Motor power (kW)	<b>30</b>
Motor efficiency (%)	<b>92</b>

#### Annual energy consumption (kWh)

Without variator (kWh)	<b>40968</b>
With variator (kWh)	<b>28477</b>
<b>Annual energy savings (kWh)</b>	<b>12491</b>

CO<sub>2</sub> Annual reduction: **2 tons / year**  
Annual savings: **~US\$1000**



**Equipped with a wireless system** giving the possibility to control the power **from a distance.**



Can be installed on **wet and dry systems.**

### POWER SUCTION PER USER

The number of users may vary depending on the material vacuumed and the distance the air must travel.



1 user :  
6 HP



1 to 2 users :  
11 HP



2 to 3 users :  
17 HP



4 to 5 users :  
30 HP

## OPTION: Pipeline cleaning system fully

# automated!

Keep your pipelines clean at all times with the automated pipeline cleaning system.  
**An essential complement** for industrial systems that can **vacuum liquid substances**.

### How does it work?

1. When the automated system starts its cleaning cycle, **it starts up the vacuum system** to circulate an airflow at all times.
2. Next, **water is propelled by intermittency** in the pipe lines.
3. Finally, **water stops running but the air continues to flow** in order to dry the pipelines. Then the vacuum system stops afterwards.

Install **up to 10 valves** on the same piping system for an optimal cleaning!

This option requires an electrical panel and is only compatible with systems that can vacuum liquids.



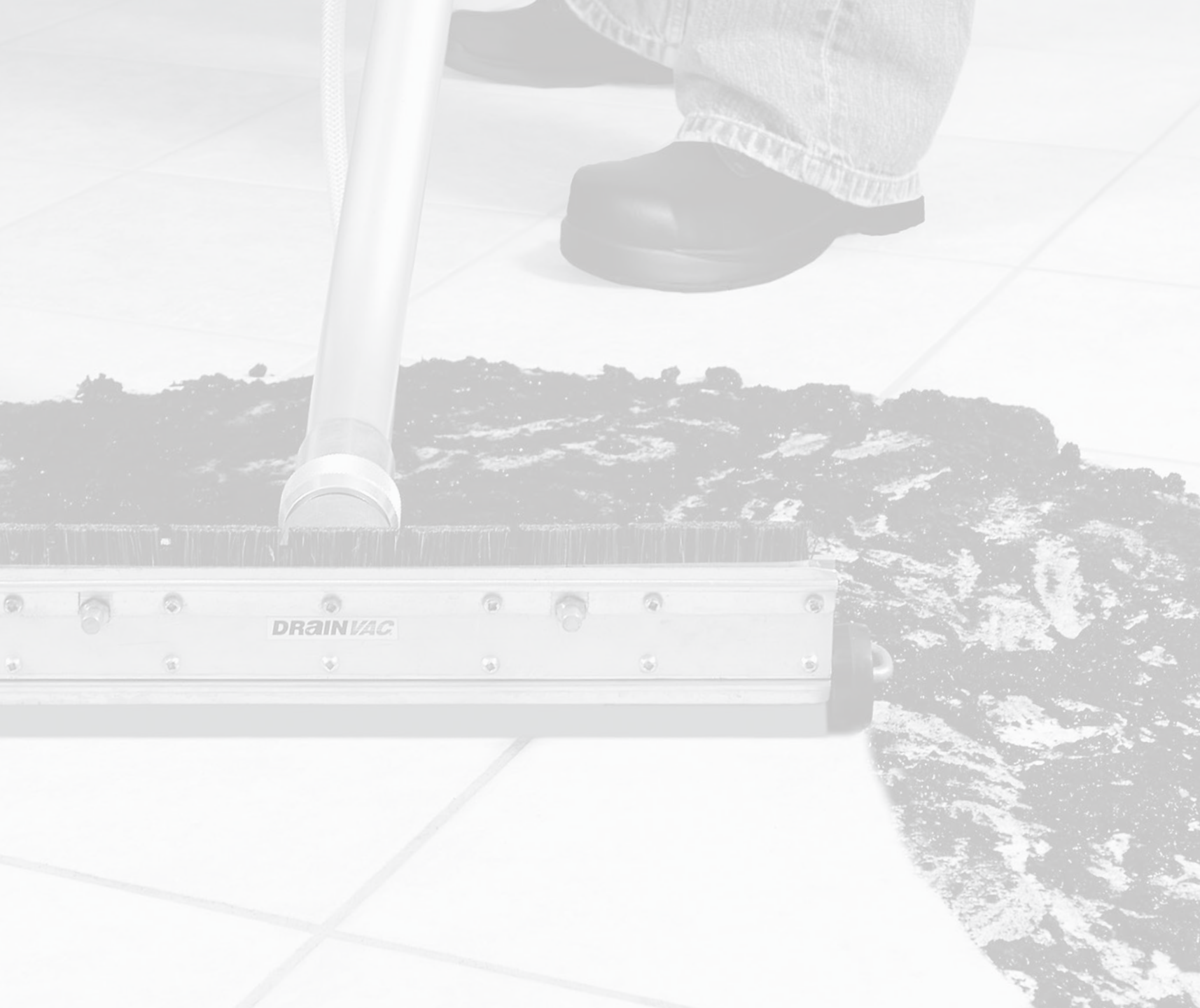
### Control & Program

The automated cleaning option **includes a control panel** which lets you control and program **up to 3 cycles per day**.

By default, a control box is supplied with an industrial system and the control panel is incorporated. If you do not have an industrial system, a control box will be added.

### Benefits

- **Keeps the pipes from clogging.**
- Keeps **constant suction power**.
- With preventive maintenance, you **avoid costly repairs** by keeping your pipelines functional at all times.
- The system **can be activated manually** if necessary.



## ACCESSORIES

**P40-41 1.5" / 38 mm**

**P42 1.25" / 32 mm**

**P43 2" / 50 mm, WATER HOSE**

## 1.5" / 38 mm ACCESSORIES

### Suggested Kit

KITCOM125 (25'/7.5 m)  
KITCOM150 (50'/15 m)

- Commercial hose with cuff and metal adaptor
- All surface adjustable squeegee with rubber blades
- Aluminum dusting tool
- Aluminum upholstery tool
- Aluminum "S" wand
- Chromed crevice tool
- Metal hose hanger
- Accessory cloth hanger



### Retractable hose

VREEL.50 (50'/15 m)  
VREEL.50A (50'/15 m anti-static)  
And more!

- Commercial hose resistant to corrosive substances
- 2 accessories and wall support included
- Also available in 1,25" (32 mm) dia.

### Suggested Carwash Kit

KI.AUTO.125 (25'/7.5 m)  
KI.AUTO.150 (50'/15 m)

- Commercial hose with cuff and metal adaptor
- Plastic crevice tool
- Plastic car wash tool
- Metal hose hanger



### Dusting tool with nylon bristles

BR05150

### Suggested Cleaning Kit

KI.LA.1

- 50' (15 m) commercial hose with cuff and metal adaptor
- 3/8" (9 mm) x 50' (15 m) water hose with 1/4" (6 mm) connection: Faucet / Tool
- Squeegee and brush with 2 low pressure external jets [1/4" (6mm) quick connect]
- Metal hanger for commercial hose



### Stainless steel upholstery tool with high pressure external jet

OU10150



### Aluminum S wand and all surface adjustable squeegee with rubber blades.

MA04150  
BE06150



### Squeegee and brush with 2 low pressure external jets

SQ04150



### Chromed crevice tool

OU10150



### Aluminum crevice tool

OU11150



### Plastic crevice tool

OUT114



### Large crevice tool

OUT131



### Carwash tool

OU13150

## 1.25" / 32 mm ACCESSORIES



### Suggested Kit

KI.CO.ST025

- 1.25" (32 mm) x 25' (7.5 m) commercial hose with cuffs and metal adaptor
- Crevice tool
- Dusting tool
- Upholstery tool
- Big metal hanger for the hose and accessories
- Accessory cloth hanger
- 2 half wands (upper and lower part)



Aluminum wand with brush and squeegee

MANC02  
MA09150



Wand with low pressure external jet

OU47151



Carpet tool

OU45151



Stainless steel upholstery tool with low pressure external jet

OU44151



Water hose: Faucet/Tool

KB20025 (25'/7.5 m)  
KB21025 (50'/15 m)

- 1/4" (6 mm) dia.
- 1/8" (3 mm) connection



# DRAINVAC®

DRAINVAC International 2006 Inc.  
150 Brunet, Mont-Saint-Hilaire,  
QC, J3H 0M6, Canada

T : 800 408.1448 • 450 467.1448  
F : 877 408.2225 • 450 467.2225  
info@drainvac.com  
www.drainvac.com

Business hours:  
Monday to Thursday:  
8:30 a.m. to 4:30 p.m.  
Friday: 8:30 a.m. to 3:00 p.m.

## AN IMPRESSIVE NETWORK OF RETAIL OUTLETS THAT KEEPS ON EXPANDING!



